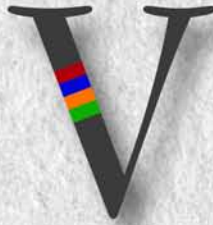


Vicksburg Crossing

Premier Senior Independent Living Community



Managed By
GRACE MANAGEMENT INC.



Vicksburg Crossing

Premier Senior Independent Living Community

The right choice for today's seniors.

The 96 unit Vicksburg Crossing includes a mix of one bedroom, one bedroom plus den and two bedroom units, each offering a unique view. Thoughtfully appointed for independent seniors, this elegant new apartment community features washers and dryers in units, an exercise room and a community room with a fireplace.

Well-suited for those who are seeking independent living in an area that offers them plenty of choices for entertainment and shopping, Vicksburg Crossing is a good option for those who enjoy a blend of active community living with quiet natural spaces.

Vicksburg Crossing is located in Plymouth, Minnesota and is open to persons 55 years of age and older. It is designed for those who are self sufficient and are seeking the benefits of an age qualified lifestyle.

With seven different and tastefully appointed apartments, Vicksburg Crossing has a floor plan for everyone.

Vicksburg Crossing offers the confidence of a life connected to familiar surroundings with nearby shopping at The Shops at Plymouth Creek and the natural ambiance of Plymouth's Parks and Trails within a mile.

The opportunity to enjoy day to day life without having to worry about the maintenance and costs associated with home ownership combined with all that Vicksburg Crossing offers is the perfect choice for the active adult.

Apartment Amenities

- Cable/Satellite ready
- Individual climate control
- Laundry in unit
- Dishwasher
- Ample storage
- Garbage disposal
- Lighted closets

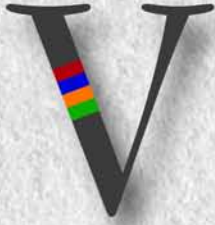
Building Amenities

- Heated underground parking
- Exercise room
- Library/computer room
- Community room



Managed By

GRACE MANAGEMENT INC.



FLOOR PLANS

One Bedroom

Vicksburg Crossing

Premier Senior Independent Living Community

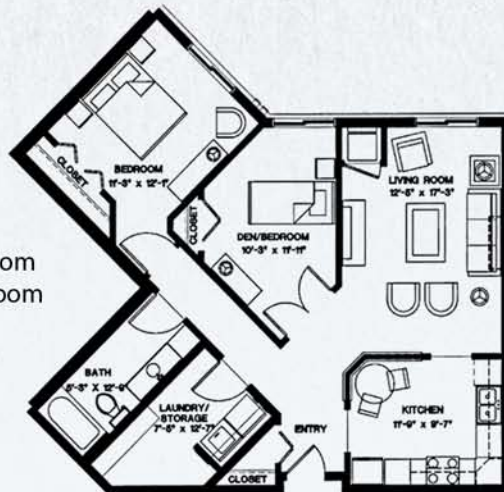
Garnet
One Bedroom
One Bathroom
Sq. Ft. 850



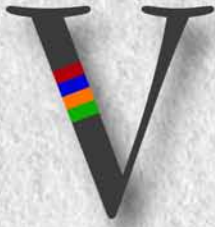
Topaz
One Bedroom
One Bathroom
Sq. Ft. 884



Opal
One Bedroom
One Bathroom
Den
Sq. Ft. 950



Managed By
GRACE MANAGEMENT INC.



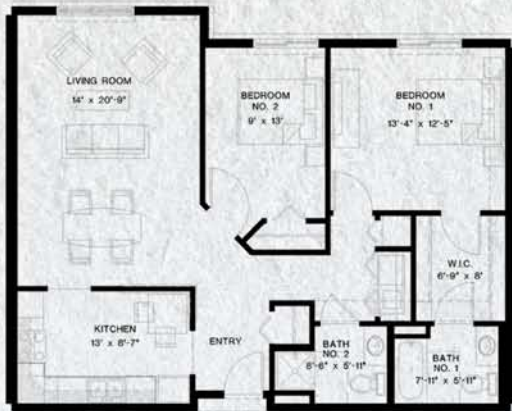
FLOOR PLANS

Two Bedroom

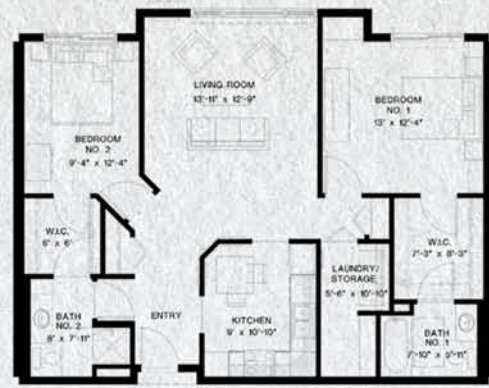
Vicksburg Crossing

Premier Senior Independent Living Community

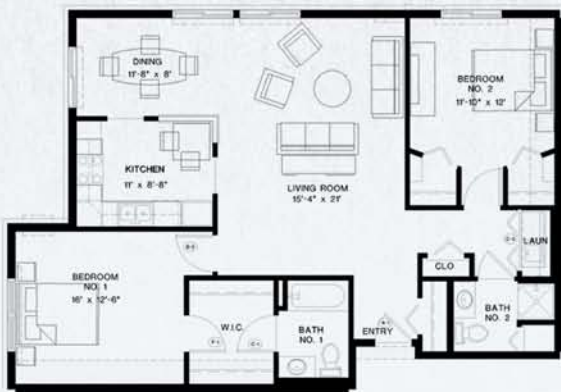
Emerald
Two Bedroom
Two Bathroom
Sq. Ft. 1055



Sapphire
Two Bedroom
Two Bathroom
Sq. Ft. 1055



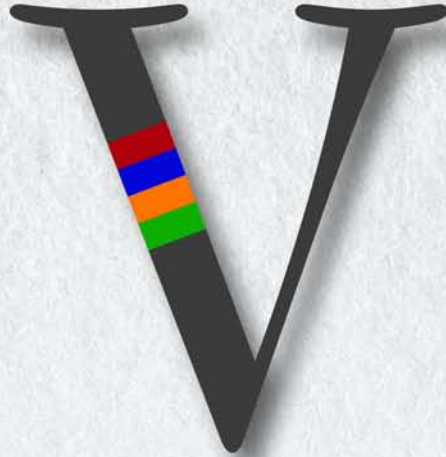
Ruby
Two Bedroom
Two Bathroom
Sq. Ft. 1787



Diamond
Two Bedroom
Two Bathroom
Sq. Ft. 1281



Managed By
GRACE MANAGEMENT INC.



Vicksburg Crossing

Premier Senior Independent Living Community

For more information or to schedule a visit please call:

763-559-1877



Managed By
GRACE MANAGEMENT INC.